

STANDARD FEATURES

80% AFUE
Heating Input range 50,000 - 125,000 Btuh
Two-stage heating
Cooling capacity 1.5 - 5 ton
Multi-position, upflow, downflow, horizontal left or right
115V humidifier and electronic air cleaner connections
Fused low voltage circuit protection
Improved humidity control in cooling

WARRANTY

Limited 25 year heat exchanger warranty, limited 5-year warranty on parts (see warranty certificate for details)
Extended warranties available

HEAT EXCHANGER ASSEMBLY

Crimp-Tite™ crimped primary heat exchanger made of corrosion resistant aluminized steel for longer life and safe operation

VENTING

Category I appliance
4" venting - vertical or horizontal with approved power venter

CONTROLS

Interruption immune diagnostics for reliable troubleshooting
115V EAC and HUM terminals
2-stage gas control with a one or two stage thermostat

SAFETY

CSA certified for US and Canada
Multiple switch and sensor safeties for safe, reliable operation

CABINET

Heavy-gauge, insulated cabinet for strength and quiet comfort
Ducane diagnostic sleeve for fast, safe troubleshooting

INDOOR AIR BLOWER

GE ECM brushless DC motor
Slow quiet blower acceleration and deceleration
Continuous fan at 50% of cooling CFM
Blower will maintain CFM to help compensate for ductwork and filters
Adjust cooling airflow with fine tune ability

Ducane Gas Furnace

FITS-ALL 80V™

**TWO-STAGE VARIABLE SPEED
UPFLOW/HORIZONTAL/DOWNFLOW**



Ducane®
AIR CONDITIONING
AND HEATING



Model Number Guide

MPG	A	V	050	B	3
MPG = Multi-Position (Gas-Fired Warm Air Furnace) Series					
V = Variable Speed 2-Stage					
Nominal Input (Btuh) x 1000 050 = 50,000 Btu/hr. 075 = 75,000 Btu/hr. 100 = 100,000 Btu/hr. 125 = 125,000 Btu/hr					
					Revision Level Blank = First Series Nominal Cooling Airflow Capacity 3 = Adjustable from 600, 800, 1000, 1200 cfm 4 = Adjustable from 1000, 1200, 1400, 1600 cfm 5 = Adjustable from 1400, 1600, 1800, 2000 cfm Minor Revision Level B = first minor revision

Physical & Electrical

Model		Input (Btuh)	Output (Btuh)	AFUE	Nom. Cooling Cap. (tons)	Flue Size (in.)	Volts/Hz/Phase	FLA	Transformer	Weight (lbs.)
MPGAV050B3	High Fire	50,000	40,000	80	1.5-3.0	4	115/1/60	9.9	40VA, 115 VAC Primary, 24 VAC Secondary	105
	Low Fire	40,000	32,000							
MPGAV075B3	High Fire	75,000	60,000	80	1.5-3.0	4	115/1/60	9.9	40VA, 115 VAC Primary, 24 VAC Secondary	113
	Low Fire	60,000	48,000							
MPGAV100B4	High Fire	100,000	80,000	80	2.0-4.0	4	115/1/60	11.8	40VA, 115 VAC Primary, 24 VAC Secondary	141
	Low Fire	80,000	64,000							
MPGAV125B5	High Fire	125,000	100,000	80	2.0-5.0	5	115/1/60	15.0	40VA, 115 VAC Primary, 24 VAC Secondary	167
	Low Fire	100,000	80,000							

Blower Data

Model	Motor HP	Blower Wheel	Heat Settings				Cooling Adjustment	Cool Settings			
			Heating CFM @ .50 Static					Cooling CFM @ .50 Static			
			Setting "A"	Setting "B"	Setting "C"	Setting "D"		Setting "A"	Setting "B"	Setting "C"	Setting "D"
MPGAV050B3	1/2	10 x 6	525	425	325	625	Nom	1200	1000	800	600
							(+)	1380	1150	920	690
							(-)	1020	850	680	510
MPGAV075B3	1/2	10 x 6	740	640	540	840	Nom	1200	1000	800	600
							(+)	1380	1150	920	690
							(-)	1020	850	680	510
MPGAV100B4	3/4	12 x 9	1250	1150	1050	1350	Nom	1600	1400	1200	1000
							(+)	1800	1610	1380	1150
							(-)	1360	1190	1020	850
MPGAV125B5	3/4	12 x 12	1650	1550	1450	1750	Nom	2000	1800	1600	1400
							(+)	2200	2070	1840	1610
							(-)	1700	1530	1360	1190

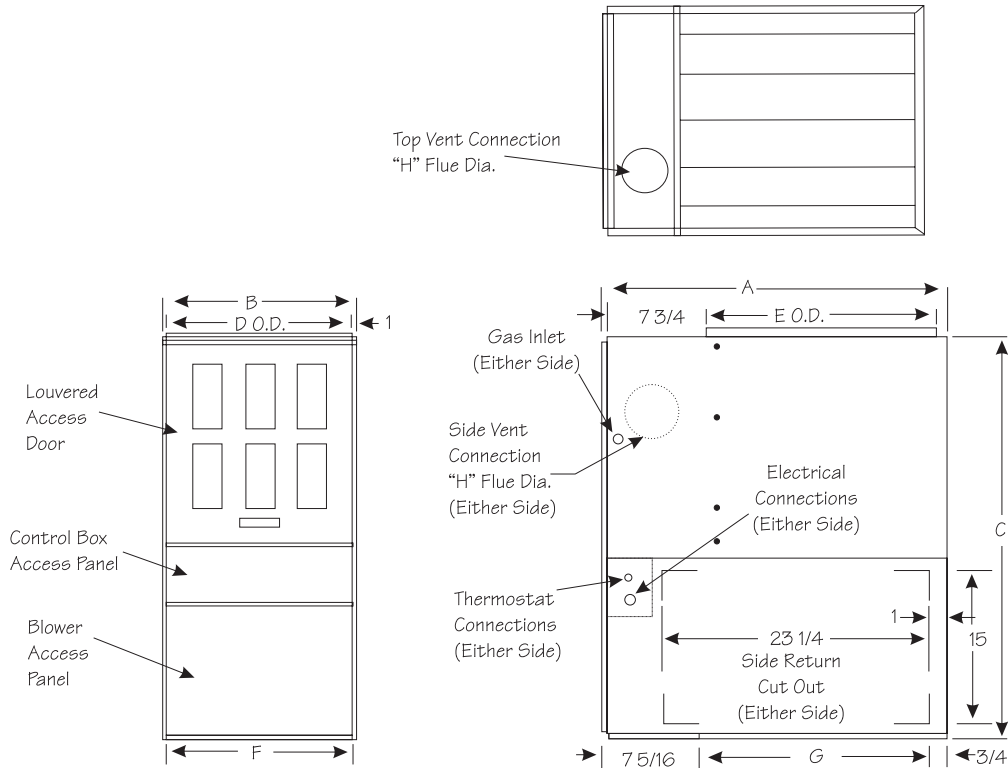
Accessories

Kit Number	Description	Used with
20066501	Floor Base Kit for Counterflow	MPGAV050B3, MPGAV075B3
20066502	Floor Base Kit for Counterflow	MPGAV100B4
20066503	Floor Base Kit for Counterflow	MPGAV125B5
20285501	Natural to LP Gas Conversion Kit	All MPGAV's
20285601	LP to Natural Gas Conversion Kit	All MPGAV's
20069901	Filter Rack Kit	MPGAV050B3, MPGAV075B3, MPGAV100B4
20069902	Filter Rack Kit	MPGAV125B5
20284801	Vent Guard (Multi-pack)	All MPGAV's
20285401	Chimney Vent Adapter Kit	All MPGAV's

Dimensions (in.)

Model Number	Dimensions			Supply Duct Opening		Return Duct Opening*		Side Return Cut Out	
	Length	Width	Height	D	E	F	G	H	J
	A	B	C						
MPGAV050B3	29 1/2	13 1/2	38 1/4	11 1/2	20 3/8	11 5/8	21 3/8	23 1/4	15
MPGAV075B3	29 1/2	13 1/2	38 1/4	11 1/2	20 3/8	11 5/8	21 3/8	23 1/4	15
MPGAV100B4	29 1/2	17	38 1/4	15	20 3/8	15 1/8	21 3/8	23 1/4	15
MPGAV125B5	29 1/2	20 1/2	38 1/4	18 1/2	20 3/8	18 5/8	21 3/8	23 1/4	15

*Bottom door removed



Clearances (in.)

Model	Top	Side	Front	Back	Vent
MPGAV050B3	2	1	6 ²	3	6 ¹
MPGAV075B3					
MPGAV100B4					
MPGAV125B5					

¹ 1" if B1 vent is used

² 3" if B1 vent is used

30" should be allowed at the front of the unit for servicing

All specifications and illustrations subject to change without notice and without incurring obligations..

www.ducanehvac.com
For more information, contact your local Ducane distributor.

